

Harvey County 4-H Happenings

The Informer

January & February 2025

K-STATE
Research and Extension



Harvey
County

www.harvey.ksu.edu

What an amazing year it has been for 4-H here in Harvey County! As we wrap up, it's the perfect time to reflect on the accomplishments, dedication, and impact made by our incredible youth, volunteers, and community. From service to learning and everything in between, we have so much to celebrate!

Summer Intern Program

Our summer kicked off with an incredible **Summer Intern Program**, where we held **37 educational activities** reaching an impressive **326 youth** and logging a total of **74 hours of service**. This program truly provided opportunities for fun, learning, and leadership—creating lasting memories the kids involved!

School Enrichment

The school year was equally exciting! Through our **School Enrichment** initiative, we were able to deliver **19 programs** across **8 schools**. A total of **559 youth** participated, gaining knowledge and skills that will serve them well into the future. These programs highlight the impact of hands-on learning and the important partnerships we have with local educators.

Ambassadors

A huge shout-out to our amazing **Ambassadors** who showed what leadership and service are all about. With **11 ambassadors** working hard, they contributed **190 hours** of service learning—giving back to their community and setting an example of what it means to be a 4-H'er.

Volunteers

We can't say enough about our **44 registered volunteers** who put their hearts into the program this year. Together, they logged over **800 hours of service**, which translates to an incredible **\$26,792** in value to the community. Thank you for your passion, dedication, and time—you are truly the backbone of 4-H!

Enrollment Highlights

We are thrilled to share that **enrollment** continues to grow! This past year, we welcomed **16 Cloverbuds** and **172 4-H'ers** into the program. Each participant brings energy, curiosity, and a unique perspective that makes our 4-H family stronger.

Looking Ahead

From leadership development to community service and hands-on learning, we are so proud of what our Harvey County 4-H members, families, and volunteers have achieved this year. The future is bright, and we can't wait to see what the next year holds!

Thank you for being part of this incredible journey. Let's continue to grow, give, and inspire together in 2024.

Anne Pitts

4-H & HUMAN DEVELOPMENT AGENT

316-284-6930 aelpers@ksu.edu



County Wide News

Multi-County 4-H Club Day

Saturday, February 22, 2025

More information will be sent out later.

For now, start preparing your presentations.

Check out our website for resources and details:

[4-H Club Days](#)

Committee Updates

4-H Committees has officially gotten started as of December 17th. Spring Beef Show and Fair Awards have met and have a plan moving forward. If you would like to follow along with the work they are doing, you can find it all in [this link](#). We will house all the meeting minutes, information, and such in a Google Drive Folder. This will allow everyone to be in the know and help when they can where they can. If you are interested in joining a committee, please reach out and we will make sure to add you to the list.

There are 5 committees for Harvey County 4-H youth and adults to join:

Fair Awards Spring Beef Show 4-H Recognition Night

Spring Sheep & Goat Show Supporter of the Year

In Search of:

2025 Harvey County Fair Theme

Last year our fair theme was Back to Our Roots in Cowboy Boots at the Harvey County Free Fair, submitted by Sarah McKown. As we gear up for the 2025 Fair year, we are looking for the newest theme. Who will submit this year's winning theme? 4-H Council will vote on the theme during their February meeting. **Harvey County 4-H Youth please submit your theme ideas by February 26, 2025 to be considered.**

To submit your theme go here:

[Online Survey Software | Qualtrics Survey Solutions](#)



2025 Fair Dates

- July 31 – Aug. 4
4-H & Open Class
- Aug. 7 – Aug. 10
Carnival, Concert,
Demo Derby
- Schedule will be shared later.

4-H Volunteer News

When you believe in the power of young people, it is important to stay up to date with theories, resources, policies, and much more. Staying up to date with the “hip” things these days takes a lot of work. Hopefully this part in the newsletter will help with keeping you up to date. ---Anne

Volunteer Resource Booklet

We're excited to introduce a new project we've been working on for Harvey County 4-H: a **Volunteer Resource Booklet!**

This booklet will connect families with experienced volunteers who can provide support in various ways, such as:

- Answering project-related questions.
- Helping families prepare for the fair.
- Offering tips and tricks.
- Organizing project meetings or weekend events.

Our goal: Create a go-to resource to help families navigate their 4-H journey more confidently!

How you can help:

1. Sign up as a volunteer! If you're experienced in a 4-H project and willing to share your knowledge, we'd love to include you. You decide how much or how little you want to help - whether it's answering questions by phone or hosting hands-on learning sessions.

2. Spread the word! If you know someone with expertise in a project area, please share this opportunity with them and encourage them to sign up using [Qualtrics Survey | Qualtrics Experience Management](#).

We're building this resource from the ground up, so we appreciate your patience as we work through the details. If you have any questions or suggestions, feel free to reach out!

Together, we can create a resource that benefits every 4-H family in Harvey County.

Thank you for being a part of this exciting project!

VOLUNTEER REGISTRATION

Volunteers for 4-H need to register on 4-H Online.

Previously screened 4-H Volunteers are required to renew on 4-H Online each year.

If you have any questions, please email Marcia at marciajo@ksu.edu.

To register or renew go to: [Sign In \(4honline.com\)](https://4honline.com)

To find volunteer resources go to: [Leaders and Volunteers](#)

*Please register by December 31

4-H Parent Corner

Thrive Flower Model

In the last newsletter, I talked about how the 4-H program is "growing the future" in many great ways. This time, I want to focus on the *Thrive Flower Model* and how it applies to you and your family.

The graphic on this page is called the **4-H Thriving Model**. It's a simplified, easy-to-understand visual representation of the thriving research, and I'll be referencing it throughout this explanation.

At the heart of the model is the **flower**, which represents the long-term outcomes we aim for when a 4-er completes their time in the program. These outcomes include being healthy, happy, finding purpose, giving back to their communities, and becoming well-rounded, thriving young adults. Research has shown that 4-H plays a significant role in helping youth grow into the wonderful individuals we all want them to be.

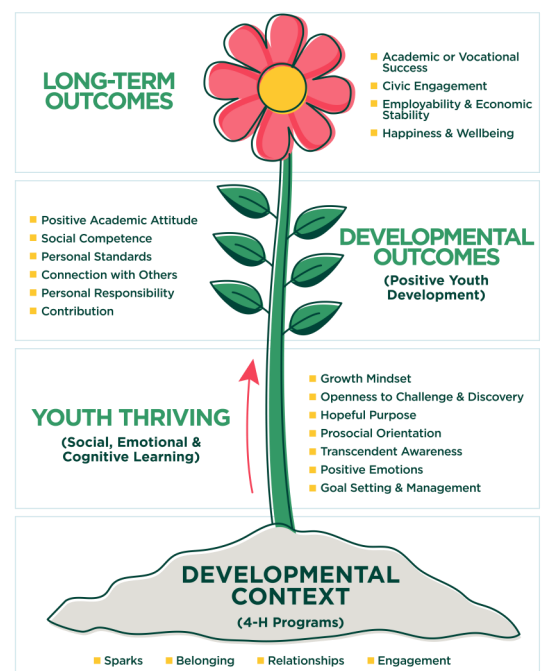
But growth starts with the **soil**—and if the soil isn't functioning correctly, the flower can't grow. In my opinion, the soil is one of the most important parts of the 4-H program, and it begins at a very local level: **club meetings**.

The four essential elements of the soil are:

1. **Belonging** – Youth (and families) need to feel a sense of belonging to the group. Without that connection, they are unlikely to stay involved.
2. **Engagement** – Meetings must include components of engagement, challenge, and learning. This is where kids get “hooked” and excited about participating.
3. **Sparks** – Sparks are a child's passion or interests. Clubs play a critical role in guiding youth to explore their passions and dive deeper into what excites them. Sparks can also ignite at the family or county level, depending on the resources and volunteers available.
4. **Relationships** – While you might initially think of youth-to-youth relationships, this actually refers to youth-to-adult relationships. Research consistently shows that kids who build positive relationships with adults outside of their immediate family are more likely to thrive and grow into productive adults. Our incredible volunteers play a vital role in providing these relationships, and they do an outstanding job of it.

By understanding this research, I hope you can better appreciate the value of the 4-H club experience and the tremendous growth your child can achieve by attending meetings and actively participating in 4-H.

Thank you for being part of this journey!



State & Other News

CALLING ALL ADVENTURERS CLIMBERS FLIPPERS & BUG CATCHERS!

Kansas 4-H Camp at Rock Springs Ranch is once again expanding to involve more opportunities for youth. 4-H Camp will be open to all youth ages 6-18. Camp options include traditional overnight camp with 3-night and 5-night options, a 2-night Mini Camp for younger kiddos, Leaders in Training (LIT) and Counselors in Training (CIT) for high school aged youth, Family Camp, and a few new Specialty Camps will be announced soon. For more details, go to rockspringranch4hcamp.org.

Youth can register for any session of interest. 4-H membership is not required to attend camp. Registration and payment will take place directly with Rock Springs Ranch at rockspringranch4hcamp.org. Registration opens on November 15. It is recommended to register early, as camp sessions will fill on a first-come-first-serve basis.

Harvey County 4-H Development Fund has set up to help pay for part of camp at Rock Spring Ranch. Any registered Harvey County 4-H youth can use coupon code **HVCO4-H25** for \$100 toward the cost of camp.

Event Scholarship Opportunity

Attending a State 4-H event and want support paying for this event?
Then apply for a Harvey County 4-H Development Fund Event Scholarship.

It is a simple two question process.
Turn it into the office once completed.

To find the application use this link:
[Records and Forms \(k-state.edu\)](http://k-state.edu/Records%20and%20Forms)

CIA - Citizenship In Action

February 16-17, 2025 in Topeka

More exact information and registration will be coming in an email soon, but you can find some here:

[Citizenship In Action](#) | [Conferences and Events](#) | [Events and Activities](#) | [Kansas 4-H Youth Development](#)

Typically, the 1st day is the afternoon and evening at the Capital. We stay overnight at a hotel. Then spend the next morning at the Capital again meeting with our representatives.

This event is for 4-H youth who are 14 and older as of January 1, 2025.

State 4-H Scholarships

There are some state 4-H scholarship opportunities for 4-H youth who are graduating High School in 2025 or are currently in college.

Go to the following link for more information and the applications:

[Scholarships](#) | [Awards and Recognition](#) | [Resources](#) | [Kansas 4-H Youth Development](#)

Kansas 4-H Projects

Animal Science

Beef
Dairy Cattle
Dairy Goats
Dog
Horse
Meat Goats
Pets
Poultry
Rabbits
Sheep
Swine
Veterinary Science

Communication & Expressive Arts

Communications
Performing Arts
Photography
Visual Arts

Consumer & Family Science

Sewing & Textile Design
Shopping in Style
Family Studies
Fiber Arts
Foods & Nutrition
Health & Wellness
Interior Design & Architecture

Natural Resources

Environmental Science
Geology
Shooting Sports
Wildlife

Leadership & Personal Development

Civic Engagement
Leadership
Reading Adventures
Self-Determined

Plant Sciences

Entomology
Agronomy
Forestry
Horticulture & Landscape Design

Engineering & Technology

Ag Mechanics Welding
Building Block Engineering
Astronomy
Computer Science
Electric & Renewable Energy
Robotics
Aerospace/Rocketry
Small Engines
Uncrewed Aircraft Systems
Woodworking





KANSAS 4-H HORSE PANORAMA

SAVE THE DATE!!

FEBRUARY 22-23, 2025 ROCK SPRINGS

Save the date! Registration
information coming soon!!!



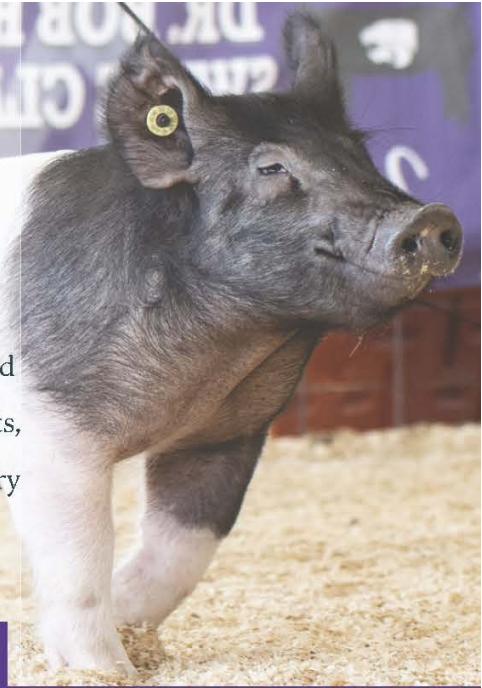
Kansas State University Agricultural Experiment Station and Cooperative Extension Service.
K-State Research and Extension is an equal opportunity provider and employer.

K-STATE
Research and Extension





2025 K-State Junior Swine Producer Day



Join us on Saturday, March 1, 2025 for the biennial K-State Junior Swine Producer Day at the Stanley Stout Center in Manhattan. This educational event will be a fun-filled day in which youth, parents, agents, ag teachers, and swine project leaders can increase their knowledge of youth swine projects. Presentations will be provided by K-State faculty members, graduate students, former exhibitors, and guest speakers. All ages and skill levels are invited! Participants will receive a K-State Show Pig Guide, t-shirt, and complimentary lunch. Only those who register by February 5 will receive a t-shirt. The registration fee is \$20/person for those who sign up by the registration deadline, or \$25/person after that date. Registration is limited to 400 attendees, on a first come, first served basis. This is a family event! Anyone attending must register, including all youth and adults.

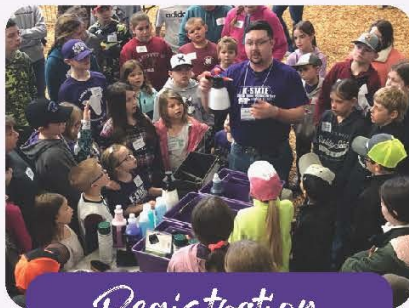
March 1



Tentative Schedule

- 8:00AM Registration Opens
- 9:00AM Welcome
- 9:15AM Project Selection
- 10:00AM Breakout Sessions
 - Nutrition, Meats, Facilities & Equipment, Breeds & Ear Notching
- 12:00PM Lunch
- 12:45PM Health
- 1:30PM Breakout Sessions
 - Showmanship, Daily Care & Clipping, Show Day Prep, Resources
- 3:00PM Wrap-up
- 3:30PM YQCA Training (optional)

Location
Stanley Stout Center



Registration

- ✔ \$20/person by February 5
- ✔ \$25/person after February 5
- ✔ Late registrants will not receive a t-shirt.
- ✔ All attendees must register, including youth, parents, and adults.
- ✔ No refunds.
- ✔ Attendance is limited to the first 400 participants to register.

Register Online
<https://commerce.cashnet.com/KSUASIND>



Questions?

Joel DeRouchey
jderouch@ksu.edu
785.532.2280

Lexie Hayes
adhayes@ksu.edu
785.532.1264

Register By February 5

Limited Attendance



Scan Me!

K-State, County Extension Councils, Extension Districts, and U.S. Department of Agriculture Cooperating. All educational programs and materials available without discrimination on the basis of race, color, religion, national origin, sex, age, or disability.

K-State Research and Extension and the Department of Animal Sciences & Industry, or their assignees, reserve the right to photograph, record the image and/or voice of participants for future research, educational, or promotional purposes. By attending, you provide consent to the above items and waive all rights to claims for payment or royalties in connection with any use of said images or recordings, unless you notify event organizers you withhold consent, in writing, prior to the event.

County Project Information

<p>Beef Project Leader: Barbara Roux E-Mail: norbar@mtelco.net</p> <p>Beef Weigh Day: March 1, 2025</p> <p>Spring Beef Show: March 29, 2025</p>	<p style="text-align: center;"><u>Beef Weigh In Information:</u></p> <p><u>Starts at 10:00 A.M.</u> <u>6307 N Hillside, Walton, Jim Brubacher Farm</u> Directions: Hillside and Walton Rd (60th) north on Hillside, west side of road. Enter south drive, south side of round top.</p> <p>We will be using single animal scales under the chute, processing will be done in one location. In order to show at the County Fair, you MUST weigh & tag at Weigh Day. If you cannot bring your animal please try to get someone else to bring your animal to be weighed and tagged THAT DAY. As a last resort, call the office and make alternate arrangements BEFORE weigh day. We will NOT tag any animals after weigh day.</p>
<p>Dog Project Leader: Amy Brown Email: h2oskii@hotmail.com</p>	<p>Our dog project gets super active in the spring make sure to reach out to Amy about times and dates!</p>
<p>Cloverbuds Leader: Lynnette Redington Email: lredington12@gmail.com</p>	<p>Cloverbud Meeting Saturday, March 1, 2025, 10 AM. Location TBD Cloverbuds and parent/guardian, this is the Countywide Cloverbud meeting. We'll review lots of ins and outs of 4-H using games and activities. Typically, there are 3 meetings in a 4-H year. This will be our 1st! If you have any questions before March 1, feel free to reach out to Lynnette.</p>
<p>Other Projects</p>	<p>Keep an eye out on your emails! There will be project meetings starting up!</p>

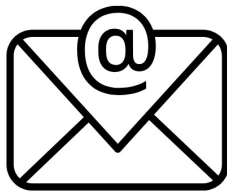
Upcoming 4-H Dates

February 16-17	Citizenship In Action, Topeka
February 22	Multi-County Club Day
February 22-23	Horse Panorama, Rock Springs Ranch
February 27, 6 PM	Ambassadors Meeting
February 27, 7 PM	4-H Council Meeting
March 1	Beef Weigh Day
March 29	Spring Beef Show
May 2	Small Animal Tagging
July 31 - August 10	Harvey County Free Fair

CONNECT WITH US



Harvey
County 4-H



aelperse@ksu.edu



@hvco4h



harvey.ksu.edu

K-State Research and Extension, Harvey Co.
P.O. Box 583 Newton, KS. 67114-0583
316-284-6930

<http://www.harvey.ksu.edu>

Kansas State University Agricultural Experiment Station and Cooperative Extension Service. K-State, County Extension Councils, Extension Districts, and U.S. Department of Agriculture Cooperating. K-State Research and Extension is an equal opportunity provider and employer. K-State Research & Extension, Harvey County, is committed to making its services, activities, and program accessible to all participants. If you have special requirements due to a physical, vision or hearing disability, please contact Anne Pitts at 316-284-6930.