

Harvey County 4-H Happenings

The Informer

September & October 2024

K-STATE
Research and Extension



Harvey
County

www.harvey.ksu.edu

Congrats to each and every 4-Her who came out to the county fair and exhibited. It is a lot of hard work, to plan, prepare, implement, and be evaluated on something you spent a lot of time and effort on. Each ribbon and each award was well deserved and you can tell all of the Harvey County 4-Hers tried their hardest throughout the year. Also big thank you to all the volunteers and parents who help shuttle kids around, make sure kids are where they are supposed to be, helping us where we might need it, and so much more! It takes everyone and we appreciate all your help in putting on a great fair!

I also want to say thank you to everyone who went above and beyond this year to make sure we had a successful and great fair. County Fair is near and dear to my heart – I was a Reno County 4-Her – and I love seeing all the kids, learning about their projects, seeing their passions, and so much more. So thank you to the kids who showed up and did just that. I also love to see how a community can come together and get so much accomplished in such a short time period. Thank you for that. It fills my cup for another year.

However, we are not slowing down. September and October is when we close out the year and ring in the new year. This newsletter is jam packed with all the end of year things. Club leader documents, scholarship, awards, outstanding 4-Hers, and much more. Please make sure to pay attention to all the important dates and mark your calendar. Come October, we will open up re-enrollment for the 4-H year. Please make sure to get that completed by the end of this year, that way you don't miss a thing. Some new things to keep in mind, we have our livestock judging team up and running. I am writing this at one of their practices right now. The other project that I am excited to talk about is shooting sports. We have a coordinator and other individuals who are going to get trained in other disciplines in a few months. I am excited for them to get this program back up and running.

Anne Pitts

4-H & HUMAN DEVELOPMENT AGENT

316-284-6930 aelpers@ksu.edu



County Wide News

Committees

We are starting something new this year. We are going to have 5 committees that are open to all 4-Hers, parents, and volunteers. We ask that you sign up here:

https://kstate.qualtrics.com/jfe/form/SV_cMktPcbIGG10MEC The committees are Fair Awards, 4-H Recognition Night, Spring Beef Show, Spring Sheep and Goat Show, and Supporter of the Year. You can be on as many as you want and each committee will meet and work on their respected committees. 4-H Council representatives will be on the committees as well and will report about the progress made during our 4-H Council meetings. This is something new, but I am very confident we will be successful with these committees.

The goal here, is to give ownership and responsibility to families and 4-Hers. To have a democratic process in planning events and making decisions. This is not my program but it is our program and I want to work with you to make it what we want it to be.

4-H Recognition Night

Please Join Us:

October 12, 2024

Doors Open at 5:30 PM

Dinner at 6:00 PM

Salem United Methodist Church, Newton, KS

All 4-H Members, Families, Sponsors, & Supporters are Welcome

This is a time to show appreciation to 4-H supporters & sponsors and to celebrate 4-H achievements!

Please RSVP Here:

[2024 Harvey County 4-H Recognition Night \(google.com\)](https://www.google.com)

HARVEY COUNTY 4-H AWARDS

In preparation for our annual 4-H Recognition Night, all Project Record Books, pin applications, and other award applications are due in the Extension Office no later than **September 20, 2024**. Please respect the due dates that your Club Leaders have set up.

The applications, forms, and instructions are available on our website:

https://www.harvey.k-state.edu/4-h/record_keeping_and_awards/

Project Record Books

Harvey County uses the Record Books to select County Champions in 4-H projects. Project Record Keeping may be recorded through ZBOOKS online or on the Form Fillable PDFs. All Project Record documents need to be printed and compiled in a 3-prong folder or appropriate sized binder.

Member Achievement Pins

Kansas 4-H Member Achievement pins are designed to recognize 4-H members as they reach milestones throughout their 4-H journey. The pins are awarded in a series: Membership, Bronze, Clover, Emerald, Silver, Silver Guard, Leadership, Gold, and Gold Guard. Member Achievement Pins are different than project pins and recognize a 4-H'er for overall 4-H growth and involvement. 4-H members should turn these applications into their Club Leader along with their record book.

Outstanding 4-H'er Award

This award recognizes Harvey County 4-H members who have demonstrated leadership and dedication to the Harvey County 4-H program. Four \$50 awards are given out. 4-H members may only receive this award once in each age group. This form can be completed by Club Leaders, Volunteers, 4-H Members or by self-nomination. Nominees must fit into the 2 age groups; 13-15 and 16+ and actively enrolled in Harvey County 4-H. 4-H'ers who have already been given this award are not eligible to reapply in the same age group.

Harvey County Volunteer of the Year

This award recognizes a Harvey County 4-H volunteer who demonstrate exceptional service to Harvey County 4-H. Harvey County 4-H will continue with nominating the winner for The Kansas 4-H Salute to Excellence Award.

4-H Club Seals

A seal is awarded to a 4-H Club each participation year that requirements are met. The seals are white, red, blue, and purple. Your 4-H Club may try for any seal without regard to the seals previously received. Please turn in all other end of the year documents at this time as well

Development Fund College Student Scholarship

This scholarship application is intended for students who have been active Harvey County 4-H members who graduated May of 2024 and are enrolled as full-time post-secondary students in the fall 2024.



48 Hours of 4-H

Join us this fall in seeing just how much we can give back to our community! The week during National 4-H Week, Harvey County will be taking part in a week long service project. 4-H youth and families will take part in providing service to others
October 12-13.

**Three years ago we completed
200 hours of community service!**

WHAT CAN I DO WITH MY FAMILY?

You can do anything that provides a service to others. For example:

- help your neighbor clean up their yard
- bake goods delivered to others
- cards or crafts for nursing homes
- collect for the food bank
- volunteer your time
- join your club with club service projects

TRACK YOUR TIME HERE:
[HTTPS://BIT.LY/3JX4DZB](https://bit.ly/3jx4dzb)

CALL TO ACTION

Plan and implement service learning projects. That can be with your club or your family. These projects can be simple or more complex. The goal is to provide **100 hours** of service in Harvey County the week of October 6-13. **100 hours** can be easy to achieve if each family did 3 hours of service.

2024-2025 4-H ENROLLMENT STARTS OCTOBER 1

ENROLL FOR THE 2024-2025 4-H YEAR ONLINE AT:
[HTTPS://V2.4HONLINE.COM/](https://v2.4honline.com/)



Happy 4-H New Year!

The 4-H Year begins every October. It is time to re-enroll and is also time to select 4-H projects to participate in.

As a reminder, there are no deadlines to enroll, but enrolling and selecting projects you are interested in by the end of December means you won't miss out on important communication concerning projects or tagging deadlines. Enrolling and submitting payment by May means you won't risk the ability to show in the County Fair.

Why not try something new? One new project for Harvey County is Shooting Sports. Building Block Engineering and several other Engineering and Technology projects are starting to grow. There is always something new to discover and learn in any project. Choose from over 30 4-H Projects to enroll in. Local support for projects may vary. Learn more about enrollment and local projects [HERE](#).

4-H PROJECTS

Animal Science

Beef, Bucket Calf, Dairy Cattle, Dairy Goats, Dog, Horse, Meat Goat, Pets, Poultry, Rabbit, Sheep, Swine, Veterinary Science

Communication & Expressive Arts

Communications, Performing Arts, Photography, Visual Arts

Consumer & Family Science

Sewing & Textile Design, Shopping in Style, Family Studies, Fiber Arts, Foods & Nutrition, Health & Wellness, Interior Design & Architecture

Engineering & Technology

Aerospace/Rocketry, Ag Mechanics Welding, Astronomy, Building Block Engineering, Computer Science, Electric & Renewable Energy, Robotics, Small Engines, Uncrewed Aircraft Systems, Woodworking

Leadership & Personal Development

Civic Engagement, Leadership, Reading Adventures, Self-Determined

Natural Resources

Environmental Science, Geology, Shooting Sports, Wildlife

Plant Sciences

Agronomy, Entomology, Forestry, Horticulture & Landscape Design



HEAD



HEART



HANDS



HEALTH



4-H Volunteer News

When you believe in the power of young people, it is important to stay up to date with theories, resources, policies, and much more. Staying up to date with the “hip” things these days takes a lot of work. Hopefully this part in the newsletter will help with keeping you up to date. ---Anne

Planning: Lesson on a Post It Note

It is time to start planning your year. It can be overwhelming when you think about the whole year, what topics to learn, questions to ask and what is your ultimate goal? Below is a “Lesson on a Post It Note” that can help guide you in planning out your lessons.

How do busy program leaders make sure that what they do with youth really sticks? We all have great intentions when it comes to planning. The reality is that most of us do not have time to create elaborate lesson plans.

There is a solution, but it involves a change in habit. The most important parts of a lesson fit on a post-it. Make sure your plan has the following three basics, and your lessons will more likely have lasting impact.

1. Purpose: What do I want them to get out of the lesson/ what do I want them to learn? Why?
2. Engaging Activity: How will they learn it/what activities will they do to learn it? What questions will you ask them during the activity to get them to share, process, generalize, and apply the concepts and skills they are learning? This is how you can help them make Experiential Learning connections.
3. Closure: What will I have them do at the end to make sure that they walk away knowing what they learned?

Examples

WHAT (learning): Begin [animals](#) unit. Today: what's a bird? **WHY:** Be good stewards of nature.

HOW (intro, main activities):

- What's-a-bird demo
- Turn Jenny into a bird

CLOSURE:

- Ask: What makes a bird a bird?
- Build a bird—craft

WHAT (learning): Birds II: What is migration?

WHY: Be part of solution to migration issues.

HOW (intro, main activities):

- Birdie review
- Birdie aerobics
- Migration headache game

CLOSURE:

Ask: What did you learn about migration?

VOLUNTEER REGISTRATION

Volunteers for 4-H need to register on 4-H Online. Previously screened 4-H Volunteers are required to renew on 4-H Online each year. If you have any questions, please email Anne at aelpers@ksu.edu.

To register or renew go to:

[Sign In \(4honline.com\)](http://4honline.com)

4-H Parent Corner

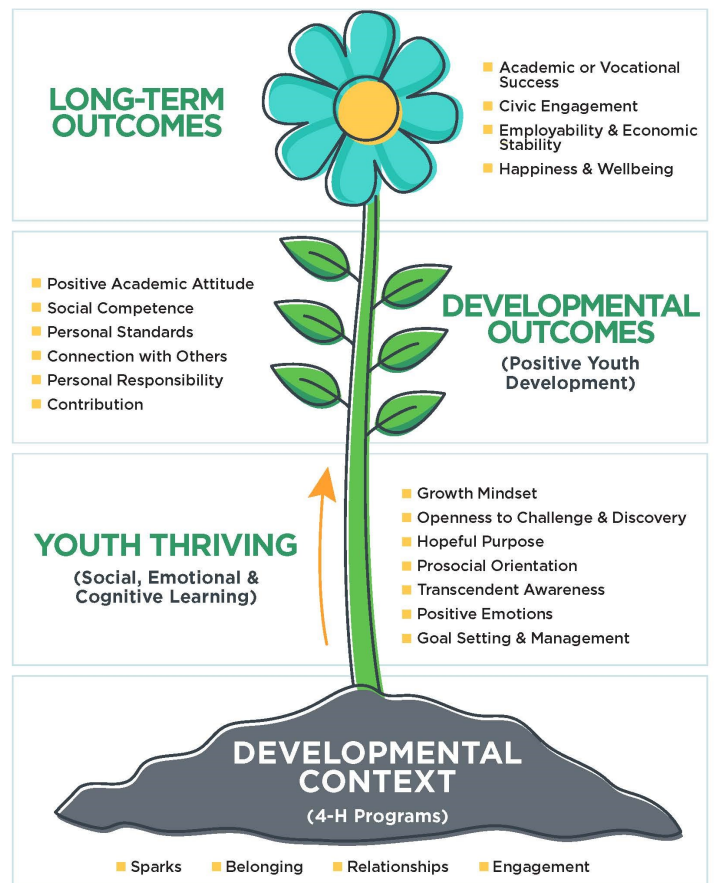
SPARKS & GOALS

Do you ever wonder why we do some of the things we do? Well there is research behind all of this and it is called Positive Youth Development, more specifically Thrive. Thriving youth go on to do great things, live healthier lives, and give back to their communities. But how do we get Thriving youth? It starts with the soil, and precisely Sparks. Sparks are a foundational component of 4-H and the 4-H Thriving model. They are a passion or interest that the youth is excited about. So, how do you know if it is a spark? It is a spark if it:

- Is intrinsic, originating from inside a person, rather than being imposed from the outside.
- Serves as a source of motivation, meaning, and self-directed action that can help drive youth people to put forth effort in other areas of their lives.
- Helps (or has the potential to help) make the world a better place.

Youth's sparks can shine brightly or dimly, depending on whether they have a spark champion. As parents you can be that champion or that bridge to a champion. That means shuttling them around to practices, club meetings, or competitions. It means taking an interest in what they are interested in or asking questions about their sparks and having that conversation.

As we start the new 4-H year. Help your child identify their sparks, make goals and plans, and achieve what they are wishing to do this year. If you have any questions or want to know more about the 4-H Thriving model, please reach out.



4-H ALUMNI

Are you a 4-H Alumni?
Go to this [survey](#) to let us know how you are doing!

State & Other News



**Kansas
State Fair
September
6-15**

Registered static projects are due in the Extension Office September 4.

Instead of premiums, 4-H youth with registered entries get 2 gate tickets to the 2024 Kansas State Fair.

Event Scholarship Opportunity

Attending a Sate 4-H event and want support paying for this event?

Then apply for a Harvey County 4-H Development Fund Event Scholarship.

To find the application, go to the link below.

It is a simple two question process.

Turn it into the office once completed.

To find the application use this link:

[Records and Forms \(k-state.edu\)](https://k-state.edu/records-and-forms)

Kansas 4-H Project Partnership Teams

Would you like to get involved with state leadership? You help make decisions and plans for various projects? 4-H youth and adult volunteers are needed to join one of the Project Partnership Teams. Applications are due September 20, 2024

Go to this link for more information and to apply to be on a particular team:

[volunteer-projectpartnershipteams \(kansas4-h.org\)](https://kansas4-h.org/volunteer-projectpartnershipteams)

Kansas Youth Leadership Forum (KYLF)

The Forums will be held November 23-24, 2024 at Rock Springs 4-H Center. KYLF is for youth ages 14-18 before January 1, 2025. KYLF will feature leadership workshops, Youth Council Elections, and opportunities to learn and have fun. For more information, visit the website below.

Registration Link will be available soon!

[Kansas Youth Leadership Forum | Conferences and Events | Events and Activities | Kansas 4-H Youth Development](#)

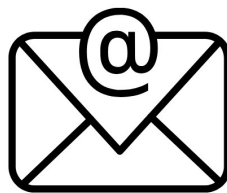
Upcoming 4-H Dates

September 6-15	Kansas State Fair
September 20	All Pin Applications, Scholarship Applications, Club information, Record Books, Outstanding 4-H'er Applications Due!
October 1	Enrollment Opens
October 6-12	National 4-H Week
October 12-13	48 Hours of 4-H
October 12	4-H Recognition Night
October 24	4-H Council Meeting
November 23-24	KYLF

CONNECT WITH US



Harvey
County 4-H



aelperseksu.edu



@hvco4h



harvey.ksu.edu

K-State Research and Extension, Harvey Co.
P.O. Box 583 Newton, KS. 67114-0583
316-284-6930

<http://www.harvey.ksu.edu>

Kansas State University Agricultural Experiment Station and Cooperative Extension Service. K-State, County Extension Councils, Extension Districts, and U.S. Department of Agriculture Cooperating. K-State Research and Extension is an equal opportunity provider and employer. K-State Research & Extension, Harvey County, is committed to making its services, activities, and program accessible to all participants. If you have special requirements due to a physical, vision or hearing disability, please contact Anne Pitts at 316-284-6930.